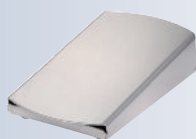


BOECO FUEGO SCS BASIC SAFETY LABORATORY GAS BURNER

is a new standard among laboratory gas burners. With its innovative design this laboratory gas burner is suitable for all flame related applications in the laboratory.



FOOT PEDAL

Specification:

Technology: Microprocessor

Programs

Foot pedal: Standard (flame during pressed foot pedal)
Start-Stop with timer, 60 min

Button: Start-Stop with timer, 60 min

Safety features

Safety Control System (SCS) with gas safety cut off: ignition and flame control
temperature monitor
burner head clogging
and assembly monitor (BHC)
automatic unit switch off, 4 h
residual heat display

Gas supply and consumption

Gas connection: 1/4" left with gas filter
Gas types: natural gas E/LL, 18 - 25 mbar
liquid gas II2ELL3B/P, 20 - 50 mbar
70 g/h liquid gas

Connected load:
Continuous cartridge operation: CV 360 - 40 min, Express 444 - 50 min
CG 1750 - 150 min, C 206 - 170 min
CP 250 - 210 min, CV 470 - 370 min

Temperatures

Flame temperature: 1350 °C on liquid gas
1300 °C on natural gas (E)

Electrical

Power consumption: 2VA
Power connection: 100 - 240 V / 50/60 Hz / max. 0,3 A
9 V DC / 1A

Mechanical

Casing and operation controls: stainless steel / glass,
UV and solvent resistant

Cover of burner shaft:
Size (w x h x d): ø 23 mm, with drains
103 x 49 x 130 mm
Weight: 700 g

Licenses

DIN-DVGW Reg.-No: NG-2211AS0167
CE: EN 61326-1, EN 61010-1
EEC guidelines: 2004 / 108 / EC, 73/23/EEC

Code

Description

| | |
|-------------|---|
| BOE 8201000 | BOECO Fuego SCS basic, Safety Laboratory gas burner with button function and foot pedal, 3 standard-programs for button (function knob) and foot pedal SCS (Safety Control System) with BHC (Burner Head Control), Removable and decomposable burner head Tild mechanism, right / left, Holding device for 3 inoculation loop holders. Nozzles for natural gas, propane / butane gas, Turbo flame Wrench 17 mm for gas connection, Screwdriver for burner head and cover of burner shaft. Tubing connector with swivel nut, Switching power supply |
|-------------|---|

Accessories

Code

Description

| | |
|----------|--|
| USB 5431 | Inoculation Loop / needle holder, 230 mm, |
| USB 5460 | Inoculation Loop, st. steel wire ø 0,6mm, ø loop 1,5mm |
| USB 5461 | Inoculation Loop, st. steel wire ø 0,6mm, ø loop 2,5mm |
| USB 5462 | Inoculation Loop, st. steel wire ø 0,6mm, ø loop 4,0mm |

